

School Check IN Version 5 Windows Installation Instructions

Installing School Check IN

WINDOWS VERSIONS

Win2K_XP_Ver5_1_New.exe

for Windows 2000 and Windows XP (Home & Professional).

MAC VERSIONS

SCIOSXP1 Installer for MAC OSX (10.3 or higher)

School Check IN requires a startup password = **Liberty**

School Check IN is always installed as a 21-day free demo. This is a fully functioning application and is limited to use for 21 days. The demo version comes with test data, or you may input your school's data. The application whether downloaded directly from School Check IN's web site or installed using an installation CD is exactly the same.

To "unlock" this demo version and license for one full year, submit your School Check IN Serial #. A Registration # (unlock code) will be provided. Any data you enter during the demo period will be maintained and transferred into the full application once registration is completed.

CAUTION

DO NOT RE-INSTALL AGAIN. If School Check IN is installed, re-installing will overwrite all existing data and remove a valid registration.

IMPORTANT

NETWORK ADMINISTRATORS

The Windows or MAC USER Name Matters

Whichever Windows or MAC user is running (logged on) when installing School Check IN will become the School Check IN **registered user** when School Check IN is started. School Check IN will use that user as its registered user and once this user is selected (identified) by School Check IN, **this cannot be changed**.

For Example -- Windows:

1. Create a new network user account for the School Check IN computer on the network (call it "**SCI_CheckIN**" or whatever name you wish to assign).
2. Create a new user on the School Check IN computer (call it "**CheckIN**" or whatever name you wish to assign).
3. Log on to the network under **SCI_CheckIN** user account.
4. Log on to the School Check IN computer as the **CheckIN** user.
5. Install School Check IN.
6. Start School Check IN.
7. School Check IN will auto select **CheckIN** as the user.

To correctly start School Check IN, log on to the School Check IN computer as **CheckIN** and double-click on the School Check IN icon located on the desktop.

If another person attempts to start School Check IN under a different Windows user name, School Check IN will not allow this and generate an error message "**This is not the correct user**".

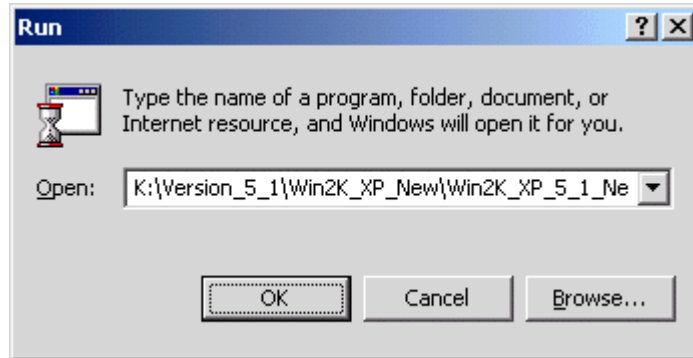
DATES

Once School Check IN is installed, the date on the School Check IN computer **CANNOT BE CHANGED**. Changing the date will cause School Check IN to fail when starting and generate an error code.

- ◆ **SET OR ADJUST THE DATE BEFORE SCHOOL CHECK IN IS INSTALLED.**
- ◆ **DO NOT ATTEMPT TO CHANGE OR ADJUST THE DATE AFTER SCHOOL CHECK IN IS INSTALLED.**

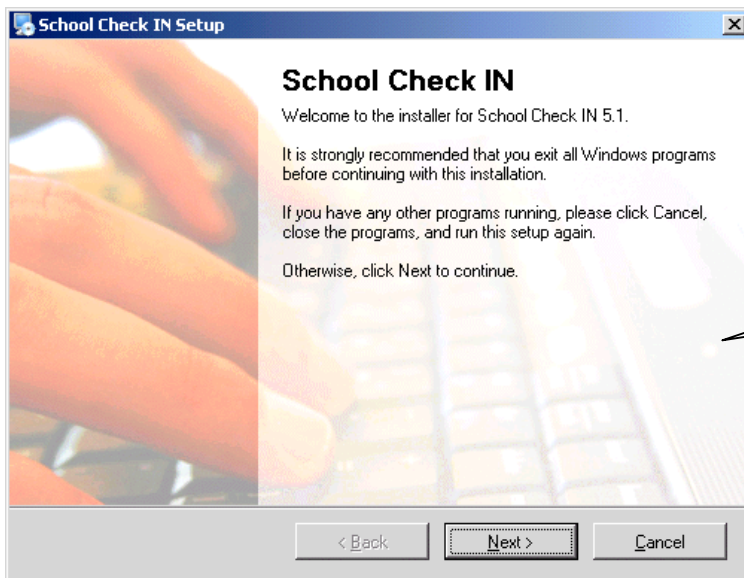
Installing SchoolCheckIN

1. Click on your Start button and select RUN. Navigate (Browse) to the cd drive. Locate the correct version for your computer and operating system. The installation file is a self-extracting file. Highlight the upgrade file and **Click OK**. Installation (self-extraction) will begin.

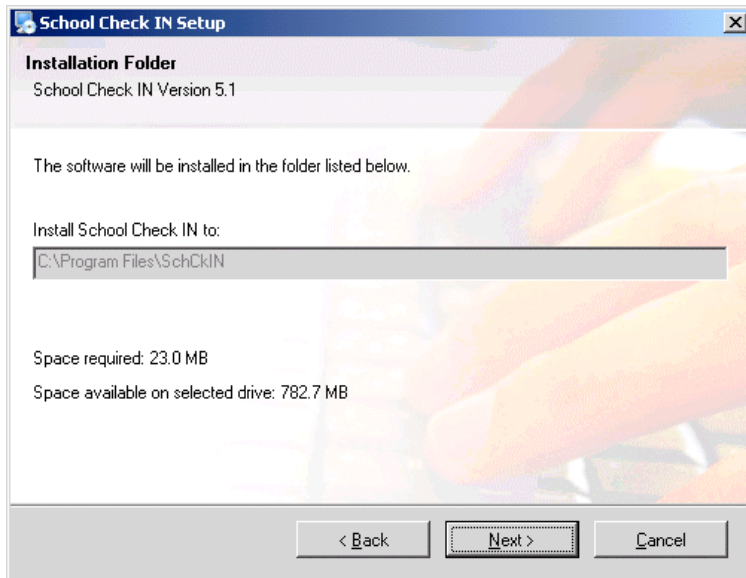
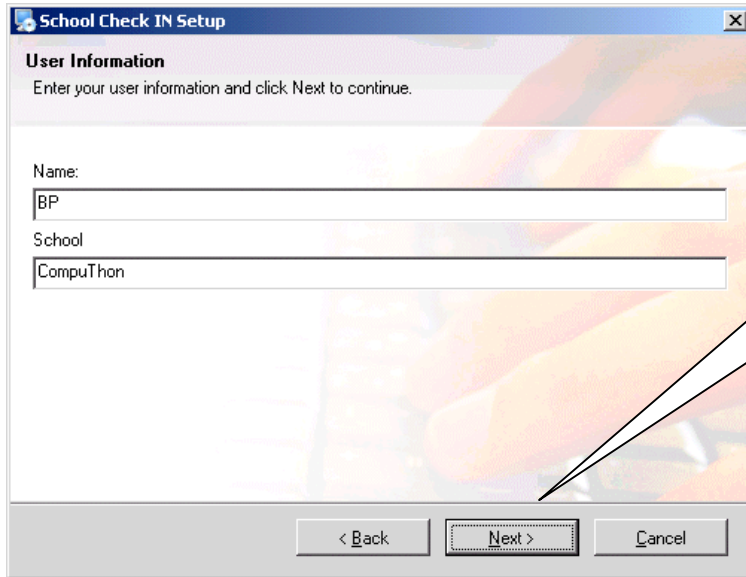


The School Check IN application will install on your C drive in the Program Files directory (**C:\Program Files\SchCkIN**). Do not install in a different directory because doing so will hinder the application for upgrading purposes. **DO NOT CHANGE THE DIRECTORY NAMES OR PATH.**

Here is what you'll see.



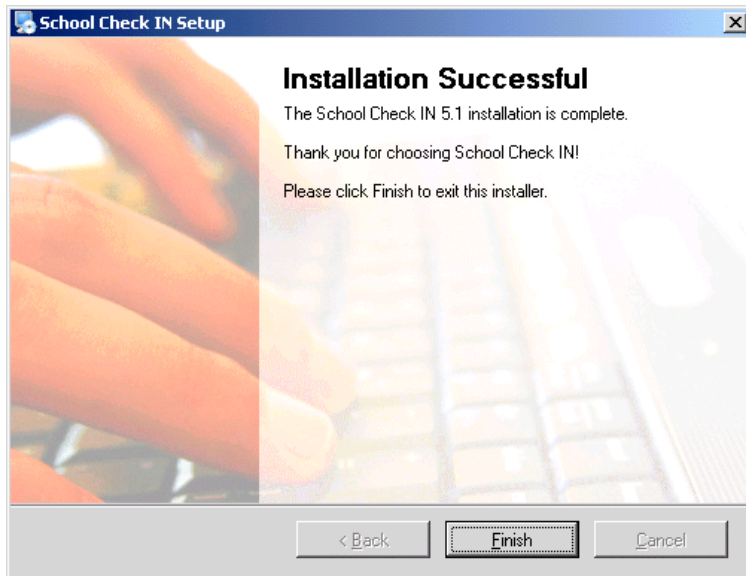
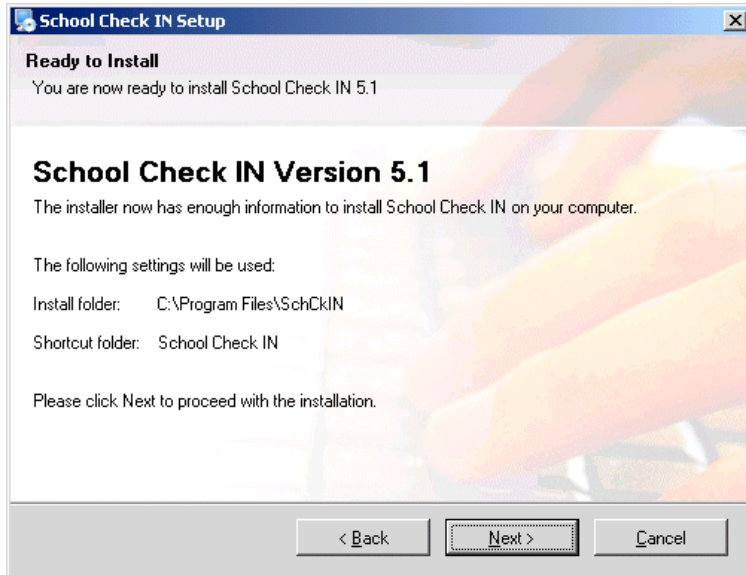
Screen view of the installation process.



A new shortcut for School Check IN will be automatically placed on your desktop.



In addition, the School check IN shortcut will be placed in your Programs Folder (accessed via the Start Button - Programs - School Check IN).



License Registration: Your original license period will not change. License Period = 365 days (1 year) from the date you first entered your registration number for Version 1. Approximately 11 months from the date of your license registration, School Check IN will notify you that your renewal is due time each you re-start School Check IN.

In addition, you will be notified by fax and/or email that your registration is about to expire. With each annual renewal, you will also get for free any upgrades to the basic version of School Check IN. If you do not acquire a new license, then at the expiration of your present license, the program will cease to operate.

Welcome to School Check IN Version 5



To start School Check IN, click on your Desktop icon.

Password [X]

Please Enter The Password:

Password:

Cancel OK

IMPORTANT -- PLEASE READ

School Check IN is **hard linked** to this computer's **date** and this computer's **user name**. Once School Check IN is in use, the computer's user name and date **CANNOT** be changed. Changing either of these two items will cause School Check IN to stop.

Before proceeding further, please verify that this computer's user name **BP** and the date **8/1/2006** are what you wish to use. If either needs to be changed, please click the **Cancel** button. Make all changes and then re-install School Check IN.

If the computer user name **BP** and the date **8/1/2006** are acceptable, then please click the OK button.

Cancel

OK

Unregistered User

This file will only open for in Demo mode. You may register now, or continue the demo by clicking the Continue Demo button.

School Check IN is fully functional in this free 21-day demo period. Sample data is provided, or you may enter your own data. Should you decide to register and purchase a School Check IN annual subscription, then any data you have entered during this trial period will be preserved into your registered application. No data will be lost.

To become a registered user, contact **www.SchoolCheckIN.com** provide the Serial Number and the User Name below.

School Check IN Serial #. This Serial # is required so that we may create your Registration #.

To start your FREE 21-DAY DEMO, click here.

A Registration # is not required to start the demo.

Enter your School Check IN Registration # here.

Serial Number

51621012

BP

Registration No.

Demo

Quit

Submit Reg. No.

Print Reg. Info

Once Registration # is entered, click here to activate.

Click to print this page.

For technical support and/or questions, please contact

SchoolCheckIN

via email info@SchoolCheckIN.com

or visit www.SchoolCheckIN.com

© 2000 - 2006 Summit Industries Corporation, Inc.

Office

Welcome

... SchoolCheckIN is backing up your data files

School

Lincoln Middle School

Students

Faculty & Staff

Early Dismissal

Volunteers

Visitors

04 www.SchoolCheckIN.com 06:31 PM

Admin Office

Welcome To Our School

Lincoln Middle School

Students

Faculty & Staff

Early Dismissal

Volunteers

Visitors

08/01/2006 www.SchoolCheckIN.com 02:43 AM